

# Schattenküsse, Schattenliebe

Umbre-s doar, sărut, iubire

# Shadow kisses, shadow love

HEINRICH HEINE

*p*

1. Schat - ten - küs - se,  
 2. Was wir - lieb - lich,  
 1. Um bré-s doar, sa  
 2. Tot ce - sta pi  
 1. Shad - ow kiss - es,  
 2. That which we would

*p*

Schat - ten - lie - be, Schat - ten - le - ben,  
 fest 'be - ses - sen, det - hin, wie  
 rut, iu - bi - re, Via ta - um, bra  
 nim prin bez - ne, Ca un - yls dis  
 grasp aw - love, firm ly Will dis - ap - pear so  
 most

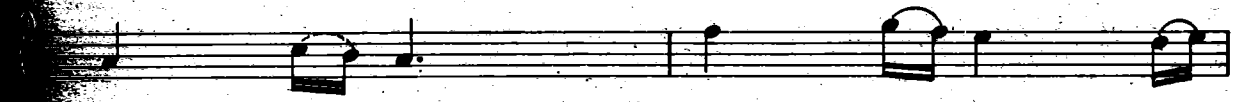
*mf*

wun - der - bar! Glaubst du - När - rin -  
 Trau me - rein, Und die - Her - zen,  
 chier a - sa! Ce - ti in - chi - pul -  
 pa re - n - sa! Ji - ta - i ni -  
 won der - ful! Fool do - you be -  
 in a dream; Ther? our hearts will

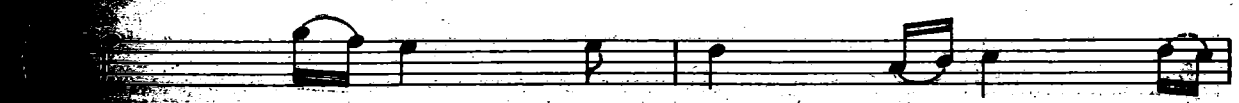
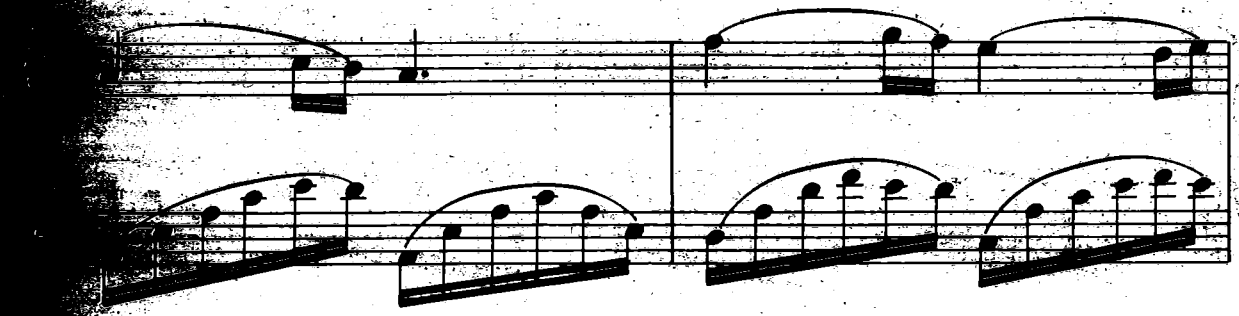
*mf*



al - les - ble - be - Un - ver - än - dert -  
 die - ges - sen, Und - die - Au - gen -  
 in - sti - re ? Ca - ni - mic - nu -  
 ma - les - ne - la - rä - o - chil -  
 lieve That all re - mains un - changed, e -  
 soon for get Our eyes will close in e -



ig - wahr ? Glaubst du - Nār - rin -  
 feh - ein Und die - Her - zen -  
 schim - ba ? Ce-fi in - chi - pui -  
 in - chid, Ui - tā - i - ni -  
 nal - ly true? Fool, da - you be -  
 nal - sleep. Then our hearts will



les - ble - be - Un - ver - än - dert -  
 ver - ges - sen, Und - die - Au - gen -  
 ne - sti - re ? Ca - ni - mic - nu -  
 prea - les - ne - la - rä - o - chil -  
 That all re - mains un - changed, e -  
 for get, Our eyes will close in e -





<i>f</i>	-	wig	-	wahr?
<i>schla</i>	-	feh	-	ein?
<i>s-o</i>	-	schim	-	ba?
<i>se</i>	-	in	-	chid.
<i>ter</i>	-	nal-ly	-	true?
<i>ter</i>	-	nal	-	sleep.

